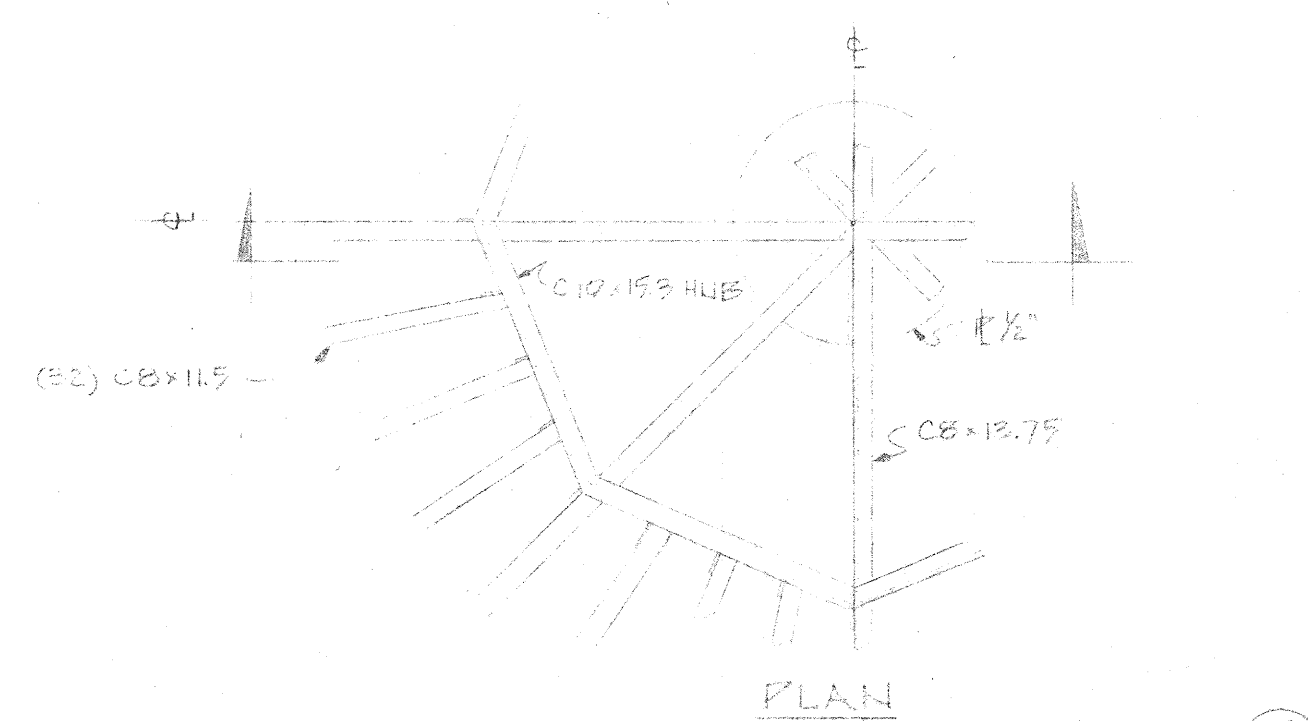
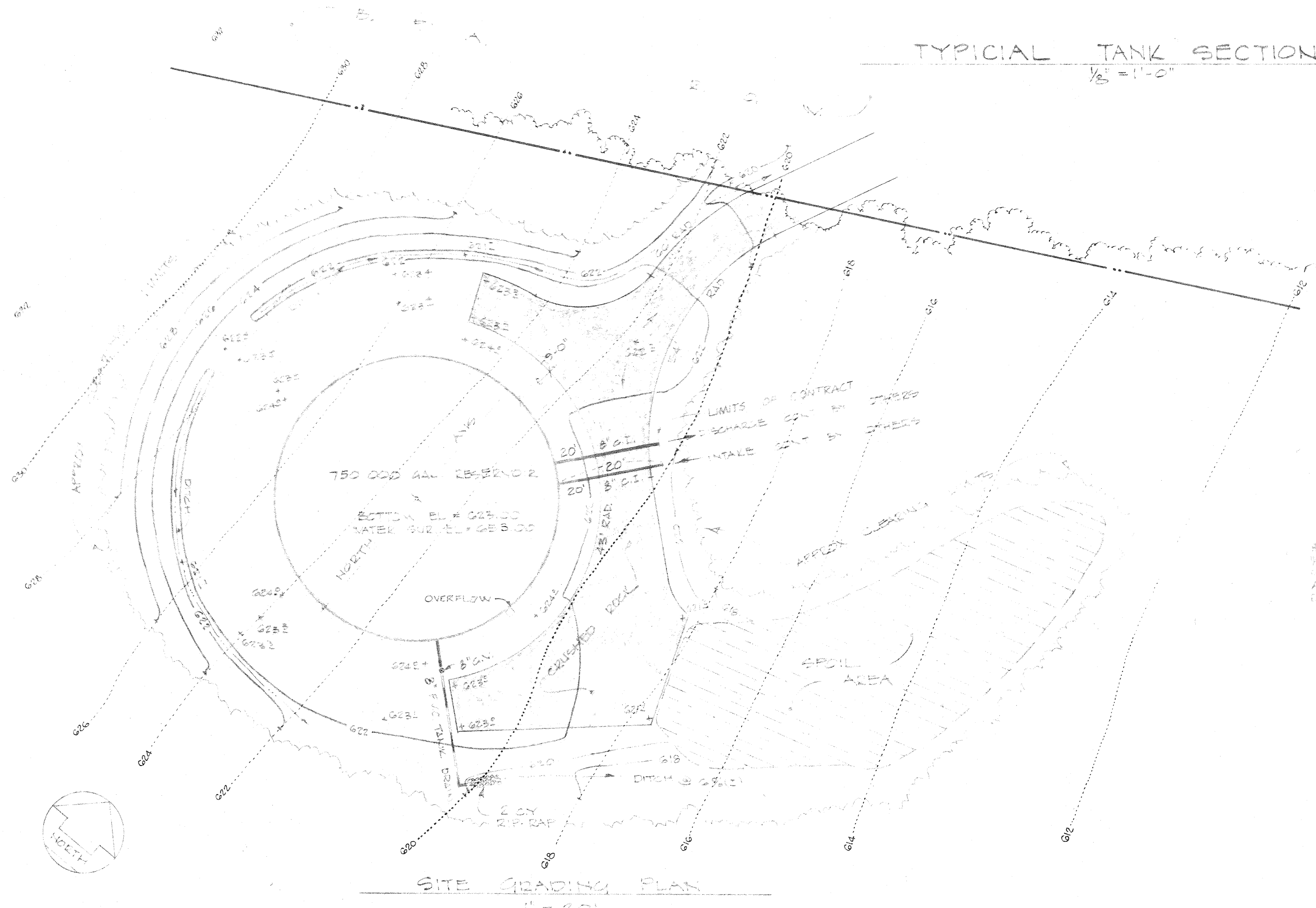
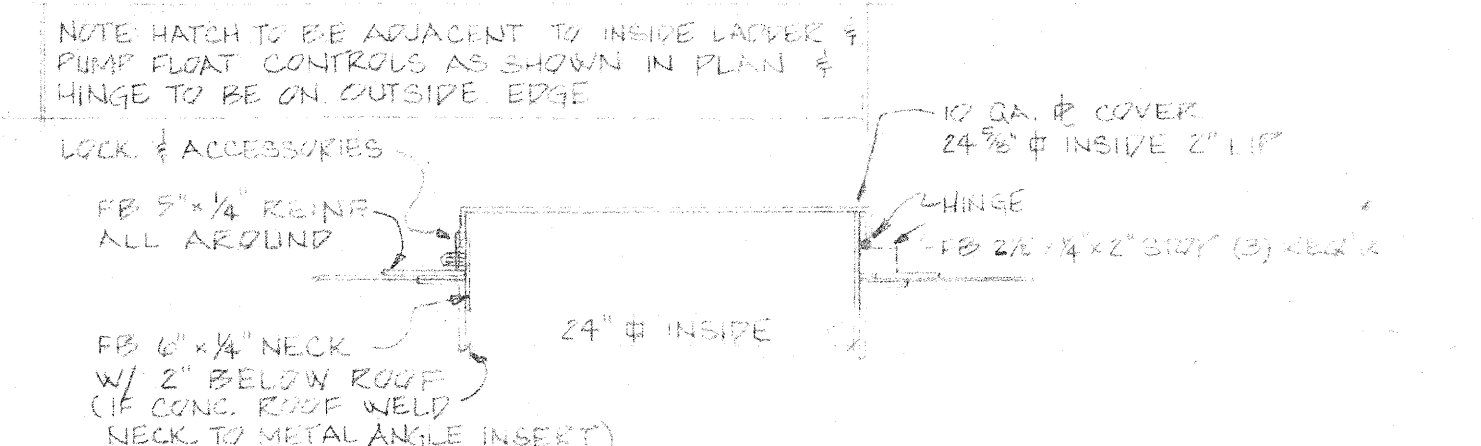


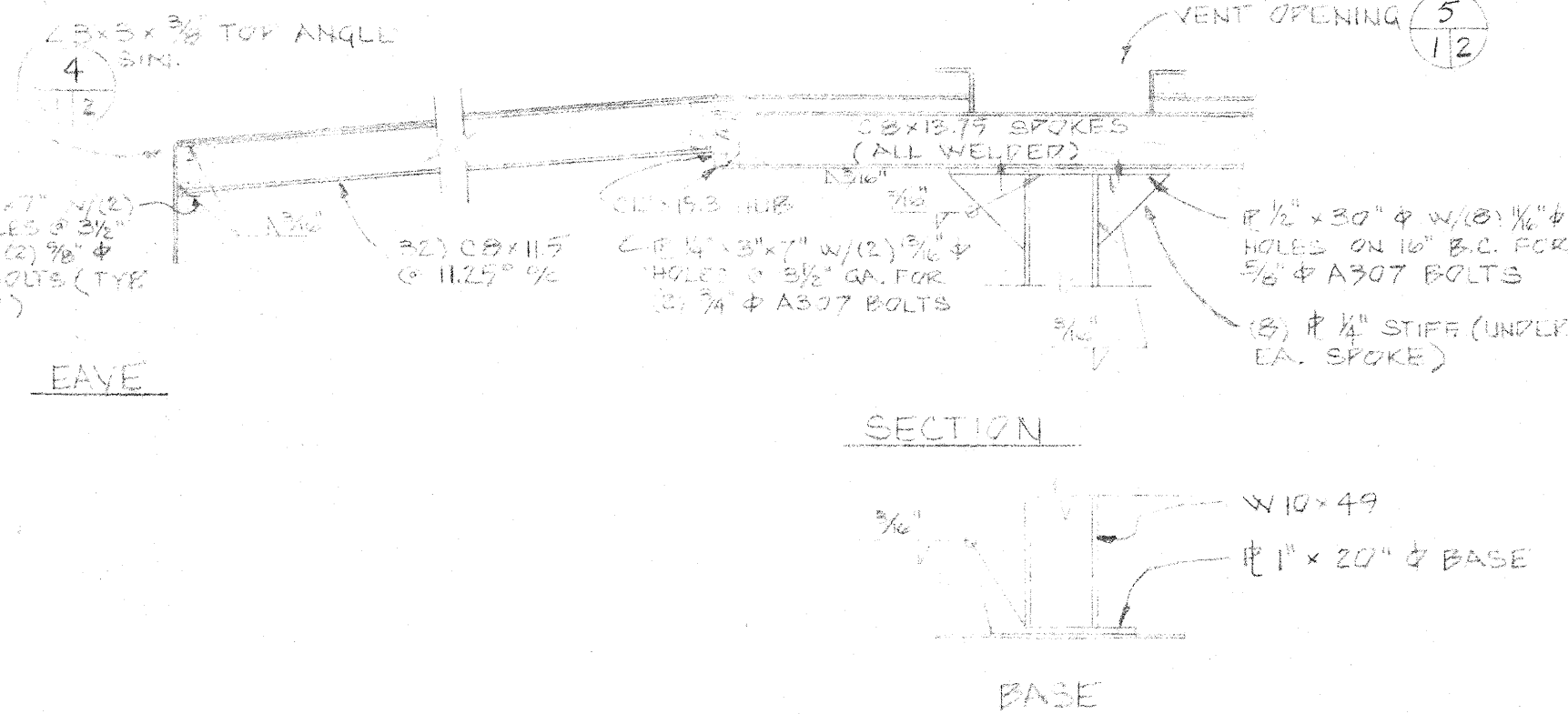
TYPICAL TANK SECTION  
1/8" = 1'-0"



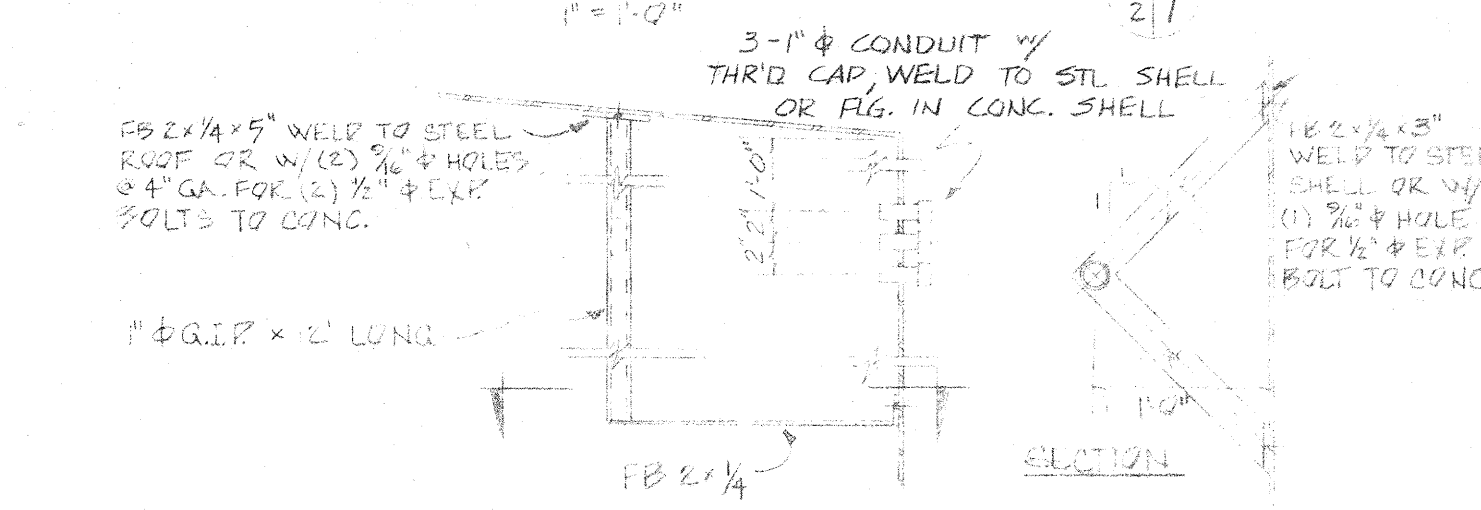
TYPICAL TANK PLAN  
1/8" = 1'-0"



ROOF MANWAY DETAIL  
1" = 1'-0"



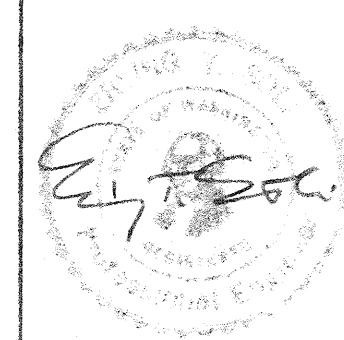
ROOF DETAILS  
1/2" = 1'-0"



FLOAT CONTROL DETAIL  
1" = 1'-0"

ISSUED  
SEP 20 1976  
HANER, ROSS & SPORSEEN, INC.

REV. NO.	DATE	DESCRIPTION	BY



**HANER, ROSS & SPORSEEN, INC.**  
ENGINEERS CONSULTANTS PLANNERS  
220 S.W. ALDER STREET PORTLAND, OREGON 97204

SUBMITTED 9/15/76  
DESIGNER [Signature]  
DRAWN [Signature]  
CHECKED [Signature]  
SUPERVISED [Signature]

SKAMANIA COUNTY P.U.D. No. 1  
CARSON WATER SYSTEM  
IMPROVEMENTS PROJECT

750,000 GALLON  
ROUND  
STEEL RESERVOIR